

# MC25

ELECTRIC BATTERY OPERATED CRANE  
MAX CAPACITY 2,5 t



JMG Cranes s.r.l. a socio unico  
"Società sottoposta ad attività di direzione e coordinamento di Compart Italia srl"

Sede Legale: Via Dante, 15 - 26100 CREMONA | Uffici e stabilimento: Via Sito Nuovo, 14 - 29010 Sarmato - PC - Italy  
C.F. e p.iva 05896090965 | Capitale Sociale Euro 84.000,00 i.v.  
T +39 0523 8486 | F. +39 0523 848000 | E. info@jmgcranes.com | www.jmgcranes.com

Edition 01/2016  
© 2016 JMG Cranes srl All rights reserved

## Pick&Carry Cranes



# MC25 2,5 t

DRIVING:	Rear by a 2.6 kW 24V AC electric motor controlled by inverter for the continuous control of movements and for crane safety, insulation Class H
BATTERY:	24V 420Ah. Battery meter indicator on dashboard. Autonomy: 8 working hours
BRAKES:	Automatic braking system on all wheels
FRAME:	Fabricated from preformed and welded quality steel plate with built-in counterweight
WHEELS:	Front nr. 2 superelastic 18x7-8" Rear nr. 1 rubber 255/80
BOOM:	4 sections boom (1 fixed, 2 hydraulically telescoping complete with manual extension) fabricated from preformed and welded quality steel, sequentially telescoping by hydraulic cylinder fitted with wear pads. Boom angle 60°/-15°
HYDRAULIC SYSTEM:	Powered by a silenced gear pump (3kW 24V DC), insulation class H. Actuators controlled by lever distributor for the millimetric managing of the boom movements. Filter and safety valve. 22 MPa working pressure
STEERING:	Operated by 180° steering helm, complete with reversing safety device
L.M.I.:	Electronic load moment indicator system, complying to CE safety standards, complete with display showing: load lifted, maximum admitted load, tilting percentage, operating radius, angle, outreach and complete with warning lights of the operating status
WEIGHT:	Kg. 2500
OPTIONS ON REQUEST:	Fully hydraulic boom, hydraulic winch, manual or hydraulic jib, man basket, chain hoist, fork attachment, on board battery charger, watering system for battery, ATEX conversions, customer colour, non-marking tires, remote control
CRANE CLASSIFICATION ACCORDING TO UNI ISO 4301-1:	A3
EU STANDARDS CE:	2006/42 CE MD - 2004/108 CE EMC - 2006/95 CE LVD - 2000/14 CE and subsequent modifications
REFERENCE STANDARDS:	EN 13000: 2010 UNI ISO 4301- 2:2011 and subsequent modifications



COMPACT DIMENSIONS



TILLER WITH BOOM AND WINCH LEVER CONTROLS



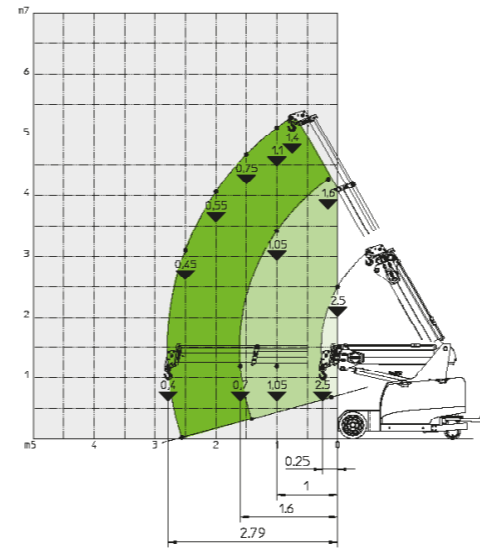
TILLER WITH RADIO REMOTE CONTROL (AS OPTION) FOR BOOM AND WINCH MOVEMENTS



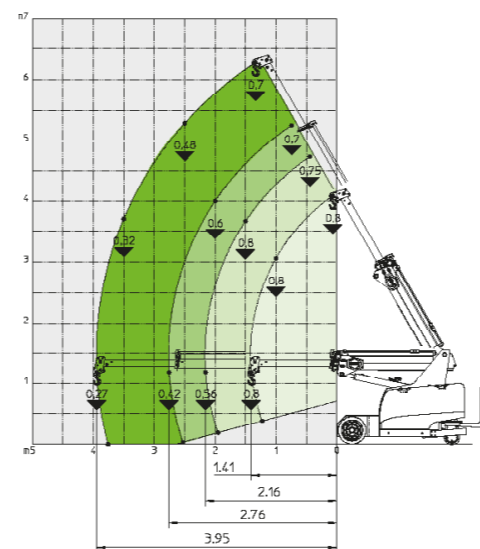
DASHBOARD

## BASIC CRANE LOAD CHART

HYDRAULIC BOOM

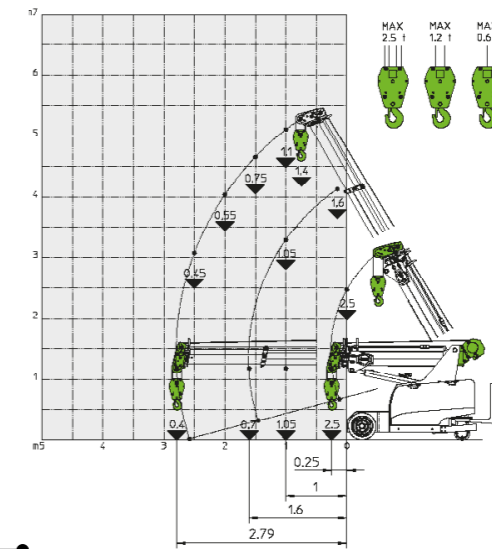


MANUAL EXTENSION

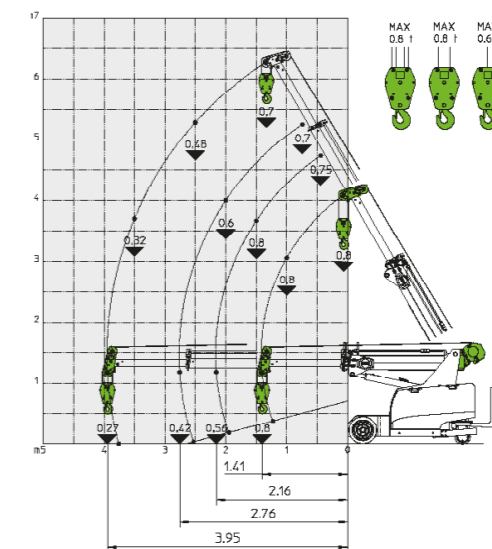


## LOAD CHART HYDRAULIC WINCH

HYDRAULIC BOOM



MANUAL EXTENSION



## DIMENSIONS

