



**JMG Cranes s.r.l. a socio unico**

“Società sottoposta ad attività di direzione e coordinamento di Compart Italia srl”

Sede Legale: Via Dante, 15 - 26100 CREMONA | Uffici e stabilimento: Via Sito Nuovo, 14 - 29010 Sarmato - PC - Italy  
C.F. e p.iva 05896090965 | Capitale Sociale Euro 84.000,00 i.v.  
T +39 0523 8486 | F. +39 0523 848000 | E. info@jmgcranes.com | www.jmgcranes.com

Edition 01/2016  
© 2016 JMG Cranes srl All rights reserved

Pick&Carry Cranes



# MC60

ELECTRIC BATTERY OPERATED CRANE  
MAX CAPACITY 6,0 t





# MC60 6,0 t

<b>DRIVING:</b>	Front by nr. 2 electric motors 7,5kW 72V AC, insulation class H
<b>BATTERY:</b>	72V 575Ah. LED battery meter indicator and electrolyte level indicator on dashboard. Autonomy: 8 working hours
<b>BRAKES:</b>	Service hydraulic foot pedal brake on all wheels; hydraulically controlled parking brake on front wheels
<b>FRAME:</b>	Fabricated from preformed and welded quality steel plate
<b>DRIVER'S PROTECTION:</b>	In quality steel, full visibility with safety glass on top, front, rear and right side of the operator
<b>WHEELS:</b>	Front nr. 2 superelastic 250-15" Rear nr. 2 superelastic 21x8-9"
<b>BOOM:</b>	4 elements boom, fully hydraulically telescoping, fabricated from preformed and welded quality steel plate. Boom angle +60°/-15°
<b>HYDRAULIC SYSTEM:</b>	Powered by a silenced gear pump (12kW). Actuators controlled by electro distributor with an electric joystick. Filter and safety valve. 22 MPa working pressure
<b>STEERING:</b>	Rear, by hydraulic motor controlled by an hydrostatic power steering with load sensing priority valve
<b>MOTOR PUMP:</b>	Electric pump 12kW 72V AC, insulation class H
<b>L.M.I.:</b>	Electronic load moment indicator system complying to CE safety standards, complete with display showing: load lifted, maximum admitted load, tilting percentage, operating radius, angle, outreach and complete with warning lights of the operating status
<b>WEIGHT:</b>	Kg. 6500
<b>OPTIONS ON REQUEST:</b>	Hydraulic winch, manually or hydraulically bending jib, men basket, chain hoist, fork attachment, on board battery charger, watering system for battery, closed cabin, ATEX conversions, customer color, non-marking tires, remote control
<b>CRANE CLASSIFICATION ACCORDING TO UNI ISO 4301-1:</b>	A3
<b>EU STANDARDS CE:</b>	2006/42 CE MD - 2004/108 CE EMC - 2006/95 CE LVD - 2000/14 CE and subsequent modifications
<b>REFERENCE STANDARDS:</b>	EN 13000: 2010 UNI ISO 4301-2:2011 and subsequent modifications



STEERING 90°+90° AND COUNTER ROTATION SYSTEM ON FRONT WHEELS



DASHBOARD AND PANEL CONTROLS

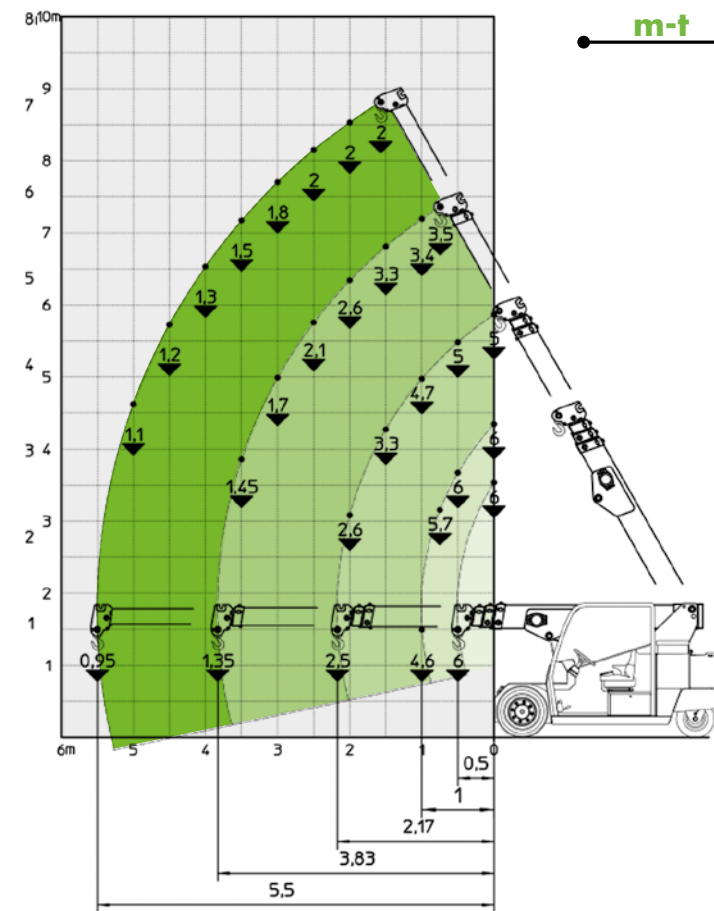


COMPACT DIMENSIONS AND MANOEUVRABILITY

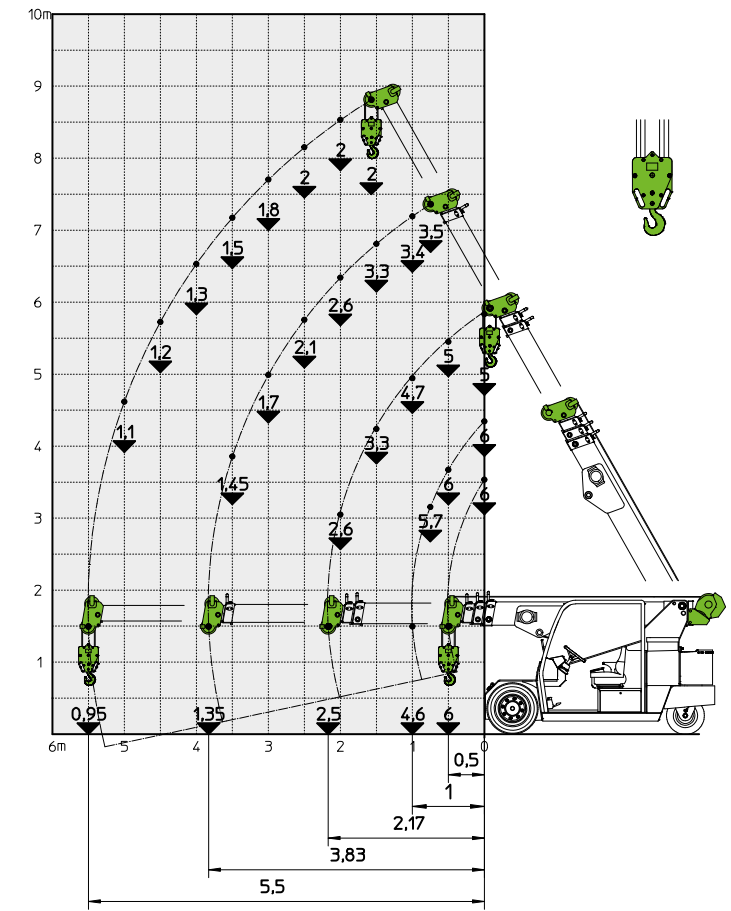


EASY TO USE

## BASIC CRANE LOAD CHART



## LOAD CHART HYDRAULIC WINCH



## DIMENSIONS

